

Detection and follow-up of systemic inflammation in Dogs



CRP (C-Reactive Protein) is a large protein synthesised exclusively by the liver. It is part of the Acute Phase Proteins (APP).

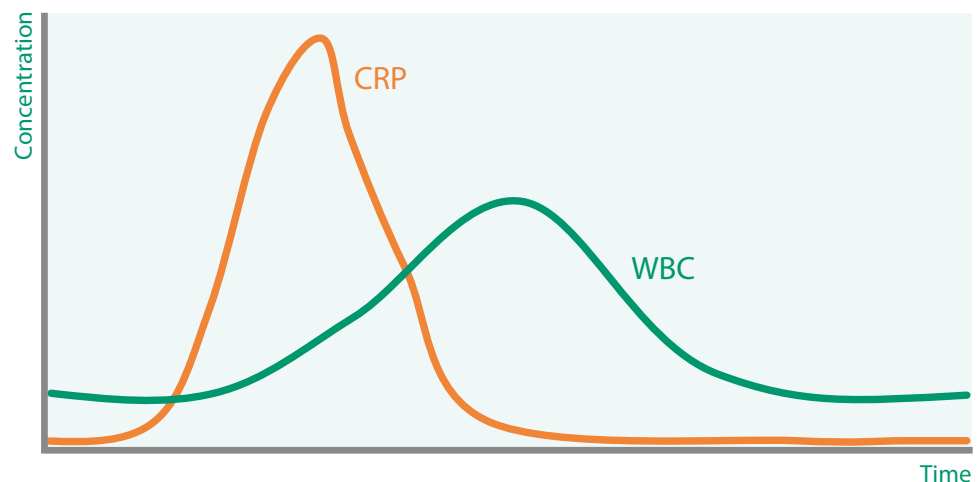
It is a very sensitive marker of inflammation in Dogs. Nevertheless, this marker is not specific to a particular aetiology.

It appears very suddenly and massively in the plasma (4 - 6 hours) at the start of the inflammatory process, reaching maximum concentration after 12 to 24 hours.

Early detection of mildly symptomatic or early inflammation

Its concentration progresses a lot quicker than it does with white blood cells (WBC).

CRP is also the parameter of choice to detect an early inflammatory state with few symptoms.



Follow-up treatment of infectious, necrotic, immune-mediated inflammatory states

If CRP is included in the initial laboratory tests, a follow-up of the progression of numerous diseases is easier.

The plasma half-life of CRP is limited to about ten hours; if the inflammatory process is well-controlled (antibiotic treatment, immunomodulator and anti-inflammatory), its concentration significantly decreases in 3-4 days and as the status of the patient improves.

For lengthy treatments, the effective action of the undertaken treatment can thus be monitored and efficiently adjusted.

Lastly, the decision to stop treatment can be taken once the CRP value normalises.

Post-surgical follow-up

CRP enables a post-surgical follow-up as, in this case, normalisation is usually even faster (24 to 36 hours).



Canine CRP

Detection and follow-up of systemic inflammation in Dogs



FUJI DRY-CHEM vc-CRP Use and characteristics

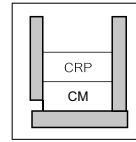
Before use, let the slide thaw at room temperature in its packaging for several minutes.



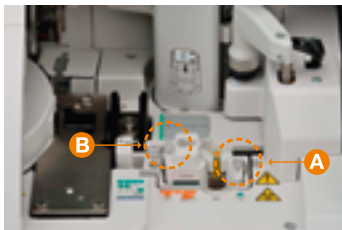
Pass the QC Card once the package is opened



Put the slide on the analyser



Position the rack and the sample



Put 2 pipette tips in A and B



Set the mix cup containing the specific diluent



Initiate testing

Consumables to be used



vc CRP-P slide



CRP Sample Diluent DL



Mixing Cup

Technical characteristics

- ▶ Name FDC vc CRP-P Slide
- ▶ Analysis time 5 minutes
- ▶ Sample Plasma and Serum - 10 µl
- ▶ Measuring range 0.3 - 7 mg/dl with possible dilution
- ▶ Common value in Dogs* Lower than 0.7 mg/dl
- ▶ Storage Remove the slide several minutes before use
Negative temperature is imperative
Diluent 2 - 8°C

*According to IFCC standards, measured with the FDC NX50

vc-CRP vs Standard Method

