





# Contenus

---

1. Configuration requise .....	4
2. Installation .....	5
2.1 Installation du pilote.....	5
2.2 Installation du port USB.....	8
2.3 Configuration du profil ICC.....	8
3. Désinstallation .....	9
4. Explication des fonctions .....	10
4.1 Onglet papier.....	10
4.2 Onglet options .....	12
4.3 Onglet ajustement couleurs.....	13
4.3.1 Section ajustement couleurs.....	13
4.3.2 Section ajustement fin.....	15
5. Indication des erreurs .....	16
6. Notes et autres informations.....	17
6.1 Notes .....	17
6.2 Instructions de fonctionnement opérateur .....	19
6.2.1 Lorsque vous souhaitez ajuster la couleur de l'image imprimée.....	19
6.2.2 Pour ajuster la balance des gris dans les faibles niveaux de gris, utilisez "Correction des couleurs" dans l'onglet des option.....	20
6.3 Question d'interdiction .....	20
6.4 Exonération de responsabilité .....	20

# 1. System requirements

---

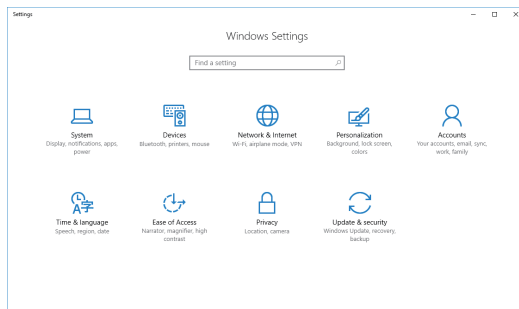
- OS : Windows 7, Windows8.1, Windows10 (32-bit or 64-bit type)
- Computer : It must meet the system requirements for running the OS properly.
- Main storage memory : It must meet the system requirements for running the OS properly.
- Hard disk : It must meet the system requirements for running the OS properly.
- Interface : USB2.0 (Hi-Speed)
  - \* Connect your computer and the printer on a one-to-one basis.
  - \* Be sure to use a cable 2m or shorter.

## 2. Installation

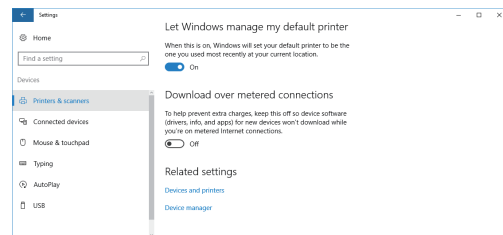
- <Important> Install the printer driver before you connect the printer to your PC.**  
**<Note> The screen images in this instruction are based on Windows10. But the operation flow is same if you use Windows7/Windows8.1.**

### 2.1 Installing the driver

- 1) Display “desktop” and press Windows “START” Key and click “Settings” and select “Devices:” (Fig.1)  
Select “Devices and Printers” in “Printers and Scanners” of “Devices:” (Fig.2)  
“Devices and Printers” will be displayed.

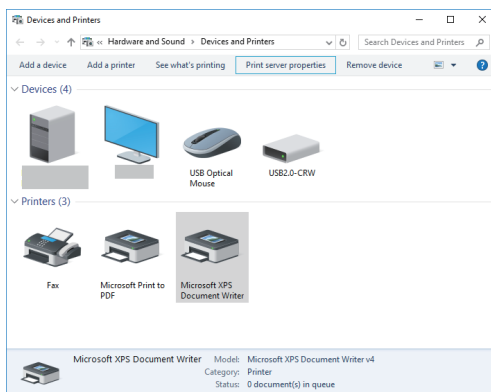


<Fig.1>

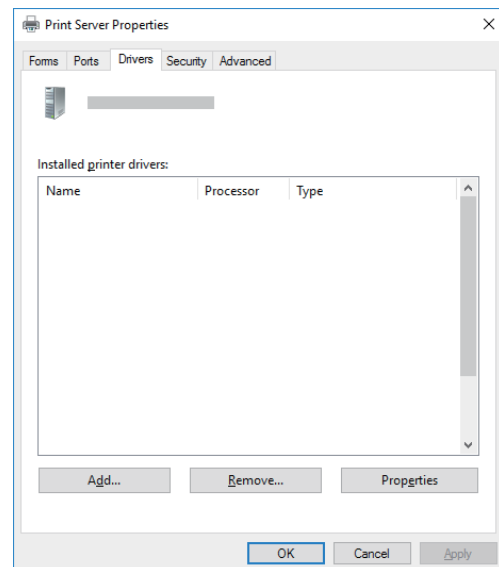


<Fig.2>

- 2) In “Devices and Printers” window, while any of the icon listed under “Printers” is selected, click “Print server properties.” (Fig.3)
- 3) Open “Drivers” tab of “Print Server Properties;” and click “Change Driver Settings” button.  
\* Depending on the operating system version, this screen may not be displayed.
- 4) The screen without the “Change Driver Settings” button in 3) will be displayed, so click the “Add...” button. (Fig.4)

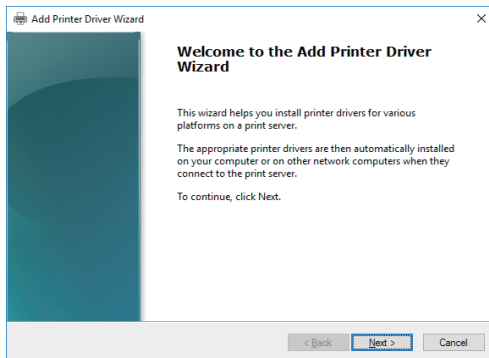


<Fig.3>

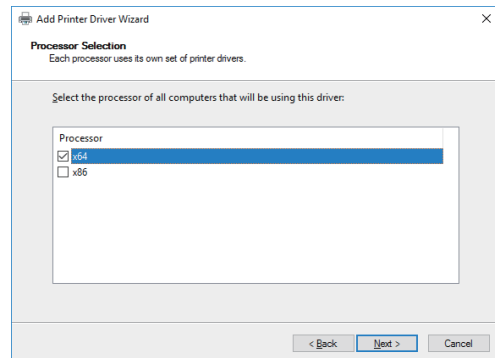


<Fig.4>

- 5) Click “Next” button on “Welcome to the Add Printer Driver Wizard.” (Fig.5)
- 6) Make sure that “x86” (when you use the 32-bit driver) or “x64” (when you use the 64-bit driver) has a tick mark, then click “Next ” button.

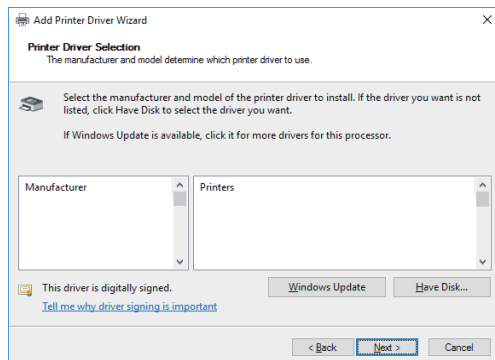


<Fig.5>

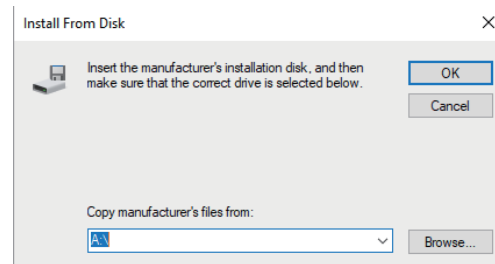


<Fig.6>

- 7) Click “Have Disk” on “Printer Driver Selection.” (Fig.7)
- 8) Click “Browse” on “Install from Disk” window.(Fig.8)

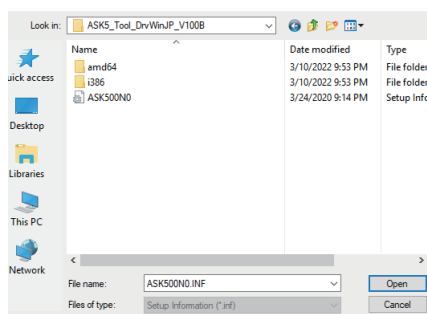


<Fig.7>

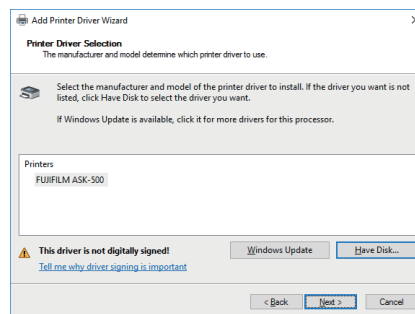


<Fig.8>

- 9) Open the driver folder that decompressed zip file(printer driver set), then “ASK500N0.INF“ will be displayed in “File name“ column. Click “Open“ button. (Fig.9)
- 10) “FUJIFILM ASK-500“ will be displayed in “Printers.” Click “Next” button. (Fig.10)



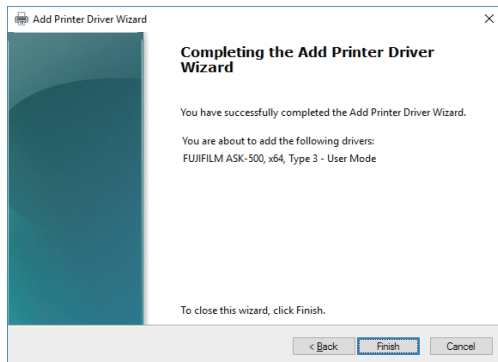
<Fig.9>



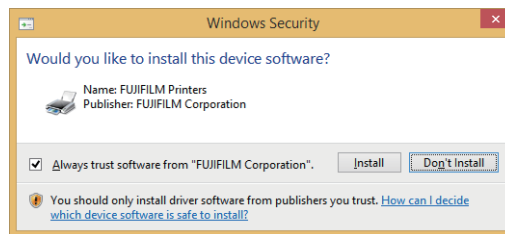
<Fig.10>

- 11) Click “Finish” button. (Fig. 11)
- 12) Click “Install” on “Windows Security.” (Fig.12)

When the installation of the driver is completed, the display of “Add printer wizard” (Fig.11) will automatically disappear. Please wait until then.

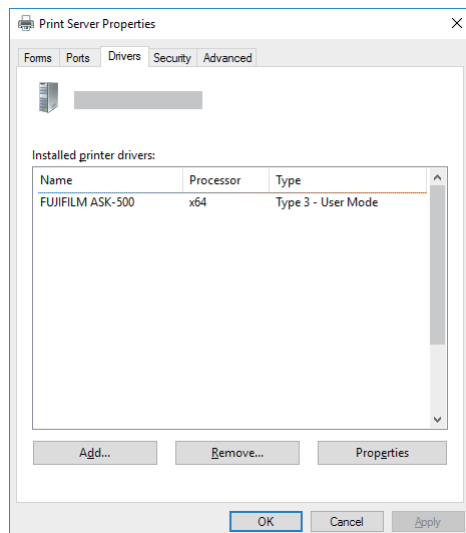


<Fig.11>



<Fig.12>

- 13) After confirming the installed printer driver is displayed in Drivers tab of the window of “Print Server Properties”; click “Close” button.(Fig.13)



<Fig.13>

## 2.2 Installing the USB port

- 1) Power on the printer and connect it to your PC with USB cable.
- 2) Install the driver automatically.
- 3) "FUJIFILM ASK-500" icon will be added to "Printer" of "Devices and Printers."
- 4) Restart the PC.

## 2.3 Setting ICC profile

- 1) Installation of ICC profile
  - Right-click the downloaded ICC profile (ASK500-V1A.icc).
  - Select "Install Profile" to install ICC profile.
- 2) Open Windows setting and select ASK-500 as device.
- 3) Select "Properties" of ASK-500
- 4) Select "Color Management" tab and click "Color Management" button.
- 5) Select ASK-500 for "Device:."
- 6) Check "Use my settings for this device" check box.
- 7) Change the "Profile selection:" setting into "Manual". (Important)
- 8) Click "Add" button to select the ICC profile that has been installed.
- 9) Click "Close" button to finish the operation.
- 10) Check "Color matching" check box in order to use ICC profile in property of driver.(refer to 4.2 in this manual)



## 3. Uninstallation

---

Operate the following procedures to uninstall the printer driver.

When uninstalling the printer driver, confirm that the printer driver is not used from the application or the print job does not remain in the spooler.

When you use the printer, confirm that the printer is not set as default printer.

When you uninstall and then reinstall the printer driver, restart the computer after the reinstallation is completed.

\* When uninstalling the driver, make sure to connect the printer to the USB port on the PC that is used for the installation.

- 1) Display “desktop” and press Windows “START” Key and click “Settings.”  
Then, select “Devices” and select “Devices and printers” in “Printers & scanners.”  
“Devices and Printers” is displayed.
- 2) Right-click the printer icon to be removed and select “Remove device.”
- 3) Click “Yes” button in the “Remove Device” confirmation dialog.
- 4) While selecting any of the icon under “Printers” category in the “Devices and Printers” window, select “Print server properties” at the top of the window.
- 5) Open “Drivers” tab of “Print Server Properties” and click “Change Driver Settings” button.  
\* Depending on the version of the operating system, this window may not be displayed.
- 6) The similar window that doesn’t have “Change Driver Settings” button at the bottom left is displayed.  
Select the printer driver to be removed and click “Remove” button.
- 7) Select “Remove driver and driver package” in “Remove Driver And Package” dialog and click “OK” button.
- 8) Click “Yes” button in “Print Server Properties” confirmation dialog.
- 9) Click “Delete” button when “Driver package information collected” is displayed in “Remove Driver Package” dialog.
- 10) Click “OK” button when “Driver package deleted” is displayed in “Remove Driver Package” dialog.
- 11) Confirm that the driver has been removed in “Print Server Properties.”
- 12) Disconnect the USB cable from your PC.
- 13) Restart your PC.

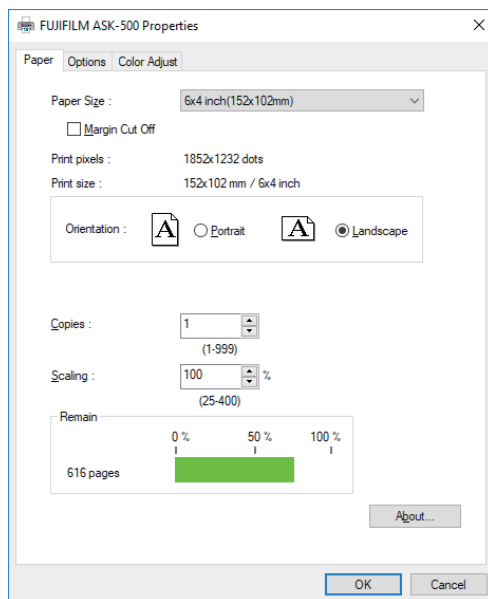
## 4. Function explanation

This section describes the printing preferences (with the Paper, Options and Color Adjust tabs) in the printer driver and the error indications.

To set the default printing preferences, take the following steps.

Click the “Start” and then the ”Settings” button. Then select “Devices” and then “Printers & Scanners”. After that, select “ASK-500” and then click the “Manage” button. Finally, select “Printer Properties”. After making settings in the FUJIFILM ASK-500 Printing Preferences dialog, click “Apply” and then “OK” to close the dialog.

### 4.1 Paper dialog



<Fig.14 Paper dialog >

#### 1) Paper Size

The size of paper is selected.

The number of print pixels for each paper size is shown in the table.

Paper size	Print dots
5 x 3.5 inch (127 x 89mm)	1550 x 1082 dots
6 x 4 inch (152 x 102mm)	1852 x 1232 dots
5 x 7 inch (127 x 178mm)	1550 x 2134 dots
6 x 8 inch (152 x 203mm)	1852 x 2434 dots
6 x 2 inch x 2 Type1 (152 x 51mm x 2)	1852 x 1232 dots
6 x 2 inch x 2 Type2 (152 x 51mm x 2)	1852 x 616 dots
6 x 2 inch (152 x 51mm)	1852 x 631 dots
6 x 6 inch (152 x 152mm)	1852 x 1833 dots
5 x 5 inch (127 x 127mm)	1550 x 1533 dots

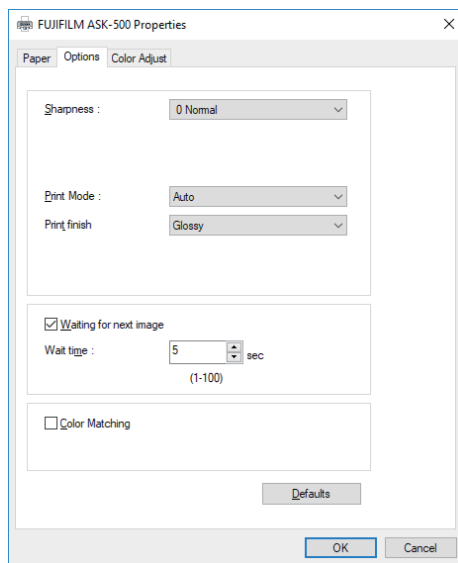
#### 2) Margin Cut Off

Margin cut ON or Off is set

If the setting is ON, then print without margin cut.

- 3) Print pixels  
The number of pixels to print in each paper size is displayed.
- 4) Print size  
The print size is displayed.
- 5) Orientation  
The direction of paper is set.
- 6) The printer prints the number of printouts which is shown in dialog. (Range: 1 - 999)  
\* When multiple copies are printed, the print sequence is sorted by pages as listed below.  
(example) The print result of 2 copies of 3 pages: 1p 1p 2p 2p 3p 3p  
Some application handles multiple copies differently where the sequence is sorted by incremental page number such as 1p 2p 3p 1p 2p 3p.
- 7) Scaling  
Enlargement scale is set. (Range: 25-400%)
- 8) Remain  
The remaining amount of the ink ribbon in the connected printer is displayed in a bar.  
When a printer is not connected or information from the printer can not be read, this bar is displayed in gray.  
\* Even when 10x20(6x8") size is selected by paper size, the remaining amount when printing 10x15(4x6") size is displayed.  
\* If you select 10x20(6x8") size and print, the remaining amount displayed will be reduced by 2 sheets corresponding to 10x15(4x6") size prints.
- 9) About...  
Displays the version information of this driver.

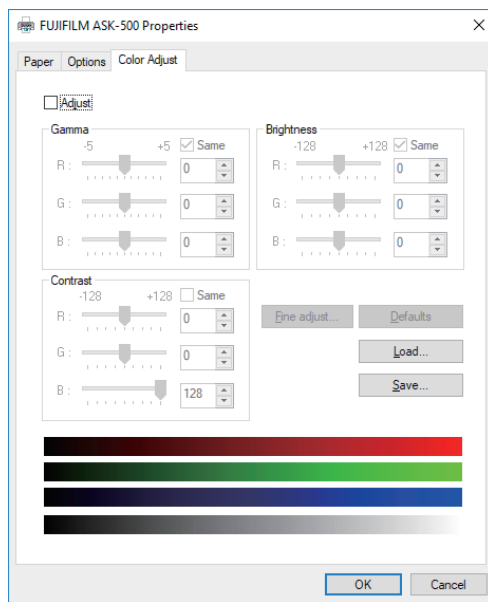
## 4.2 Option setting dialog



<Fig.15 Option setting dialog>

- 1) Sharpness  
none / -3 / -2 / -1 / 0 / 1 / 2 / 3  
Level of outline correction is changed.  
none : Not perform the outline correction.  
-3 to 3 : The value is smaller, the outline becomes softer.  
The value is larger, the outline becomes sharper.
- 2) Print Mode  
Set the printing speed. Selected setting: Auto
- 3) Print Finish  
Select the print finish. Selected setting: Glossy/Matte
- 4) Waiting for next image  
If the setting is ON, in the media of 15x20 (6x8"), if you print the half size, set the waiting time for printing the next image in the same ink surface.  
If the setting is OFF, print without waiting.  
\* This setting is intended to set the waiting time after the transfer of the last of the image of the print job.  
Waiting time between images in the print job is fixed (100 seconds).
- 5) Wait Time  
It set wait time. (Range: 1-100 sec)
- 6) Color matching  
Color matching is carried out according to the ICC profile set in the "Color control" tab.  
When the ICC profile is not set in the "Color control" tab, set the "Color matching" to OFF because the color matching is not carried out in this case.
- 7) Defaults  
All the settings in Option dialog are reset to the defaults.

## 4.3 Color Adjustment



<Fig.16 Color Adjustment dialog>

### 4.3.1 Color Adjust dialog

1) Adjust

Tick the box for the color adjustment.

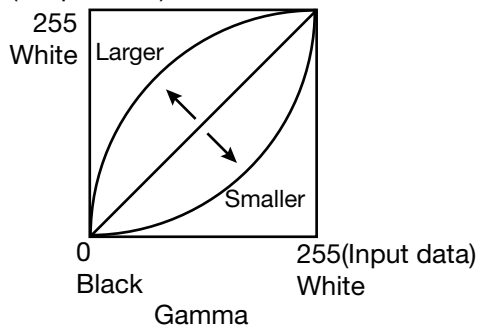
2) Gamma

Adjusted value (-5 - +5)

When you want to increase the density of the middle tones, decrease the value of "Gamma" of the color adjustment dialog.

Same check box ON:R,G and B are same value, OFF:R,G and B are individually adjusted.

(Output data)



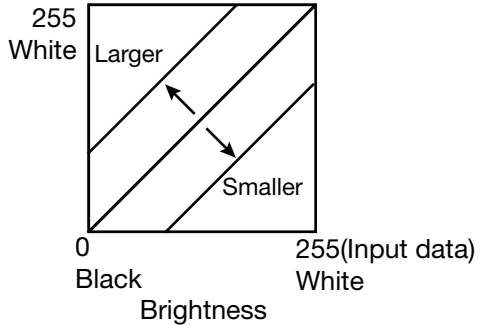
3) Brightness

Adjusted value (-128 - +128)

When you want the brightness of the print picture to be dark, the value of "Brightness" of the color adjustment dialog must be decreased.

Same check box ON:R,G and B are same value, OFF:R,G and B are individually adjusted.

(Output data)



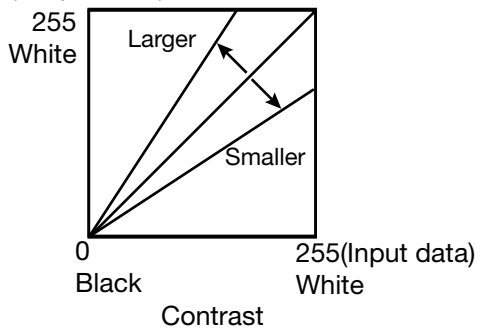
4) Contrast

Adjusted value (-128 - +128)

When you want the contrast of the print picture to be strong, the value of "Contrast" of the color adjustment dialog must be increased.

Same check box ON:R,G and B are same value, OFF:R,G and B are individually adjusted.

(Output data)



5) Fine adjust

The more minute color adjustments are carried out by the Gamma adjustment tone curve.

6) Defaults

All adjustable values in Color Adjust dialog become 0.

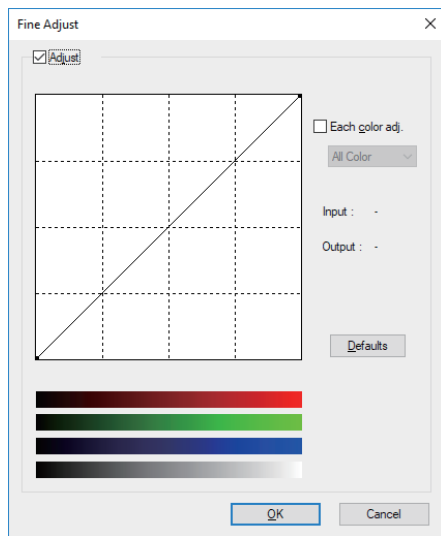
7) Load...

The color adjustment setting file is loaded.

8) Save...

The color adjustment setting is saved.

### 4.3.2 Fine Adjust dialog



<Fig.17 Fine Adjust dialog>

- 1) Adjust  
Tick the box for the color adjustment.
- 2) Each color adjustment  
ON : Each RGB color is individually adjusted.  
OFF : The same adjustment of each RGB color carries out.
- 3) Selecting the color to be adjusted  
When adjusting color individually, select the color to be adjusted.
- 4) I/O value display  
The input (gradation value before adjustment) and output (gradation value after adjustment) of the adjustment point are displayed.
- 5) Defaults  
All the tone curves become a linear straight line of the range (0, 0) - (255, 255).

## 5. Error indication

No.	Error dialog message	Button	Operation
1	Printer is not connected.	OK	Click OK button. After connecting the printer (Turn on the printer / Connect the I/F cable), printing starts automatically.
2	Data Transmission Error.	OK	When clicking OK button, the dialog disappears and the print job is deleted. After turning the power off and turning it back on, start printing process again.
3	The printer does not respond. Turn the printer Off and then On again, and try again.		
4	Something is wrong with the printer. (xxxx) Turn the printer Off and then On again, and try again.	Cancel	When the error is resolved, the dialog disappears and printing starts automatically. When Cancel button is clicked, printing is canceled. All the jobs in the printer are cancelled and printing is cancelled. * Numeric characters are indicated in (xxxx).
5	Paper size of printer driver and Ink Ribbon type do not match.		
6	Ink Ribbon Empty (xxxx)		
7	Ink Ribbon End (xxxx)		
8	Ink Ribbon Error (xxxx) Check Ink Ribbon.		
9	Ink Ribbon Error (xxxx) Check Ink Ribbon and set Paper again.		
10	It is not equipped with the Paper Strip Bin (xxxx)		
11	Paper Empty (xxxx)		
12	Printing unit is opened. (xxxx)		
13	Paper End (xxxx)		
14	Paper JAM (xxxx) Check Ink Ribbon and set Paper again.		
15	Mechanical Error (xxxx) Check Ink Ribbon and set Paper again.		
16	Mechanical Error (xxxx) Turn the printer Off and then On again, and try again.		
17	Electrical Error (xxxx) Turn the printer Off and then On again, and try again.		
18	Printer driver settings is incorrect.		
19	Transfer image size is out of range.		



## 6. Notes and other information

---

### 6.1 Notes

- 1) Secure of Hard disk for spool file  
Secure the capacity of Hard disk for spool file enough for the printer operation and the number of printing sheets.  
The printing cannot be correctly carried out when the capacity is running short.  
The drive for spool file is the same drive as the drive of Windows system usually.
- 2) Operation of the printer  
Refer to the operation manual of the printer.  
Do not turn off the power switch during data transfer or print.  
If you turn off the power switch, restarting of a computer may be needed.  
(When deletion of a printing data cannot be performed, restarting of a computer is required.)
- 3) Applicability of color adjustment  
The color adjustment is applied to the entire printing range including the background.
- 4) About "Print directly to the printer"  
With some applications, if "Print directly to the printer" is selected, objects may not be printed correctly.  
In that case, select "Spool print documents so program finishes printing faster" for printing.  
Click the "Start" and then the "Settings" button. Then select "Devices" and then "Printers & Scanners".  
After that, select "ASK-500" and then click the "Manage" button to display "Printer Properties". In "Printer Properties", open the "ASK-500 Properties" window. Select the "Advanced" tab, and there you will find the settings area.
- 5) About connection of a computer and a printer  
Do not disconnect the interface cable during data transfer.  
If the interface cable is disconnected, wait 1 minute or more after disconnecting the cable to connect it again. If the cable is connected without leaving an enough interval, the printer driver may not work correctly.
- 6) System requirements for USB interface  
Use a personal computer with Windows 10 pre-installed, and make sure that its USB operation is guaranteed by the manufacturer.  
This printer supports USB 2.0 (Hi-Speed USB) interface.
- 7) Connection of USB cable  
When you take out and insert a USB cable after installation of a printer driver, wait 10 seconds or more after extracting a cable.  
If the cable is reinserted without leaving an interval, the printer may not operate normally.

- 8) **Print job**  
Do not delete the print job in the spooler during data transfer. When deleting it, do not start printing until the printer becomes to the initial status.
- 9) **Number of prints**  
With some applications, the number of prints set by the printer driver does not work. Set the number of prints from the print dialog box of the application.
- 10) **Remainings**  
Remainings on the Paper tab shows the remainings of the ink ribbon by a bar, by reading information from the printer when the Paper tab is displayed. The correct information may not be acquired during printing.
- 11) **Connecting multiple printers**  
When connecting multiple printers to a single computer, the “Found New Hardware Wizard” is displayed for each of the connected printers, and the printer driver installation is performed. Printer driver installation is performed for each connected printer.
- 12) **Errors during printing**  
When an error occurs during printing, it may not be displayed on the monitor. To resume printing, check the indicator on the front of the printer and take the countermeasure. For the indication by the indicator of the printer and the countermeasures, see the detailed manual of the printer.
- 13) **Setting of the color matching**  
Even if the color matching is set to ON by the printer driver, color matching may not be available with some applications.  
With some applications, color matching is effective even if it is set to OFF.
- 14) **When you print and “Parameter’s value is invalid.” is displayed, perform the following operations.**
  - a) Right-click on “Start” and select “Device Manager” from the pop-up menu.
  - b) Right-click on the computer icon at the top of the device tree, and select “Scan for hardware changes”
- 15) **Install the printer driver first, and then connect the printer to the personal computer.**
- 16) **When the printer is in standby status, the printer driver may not be installed correctly. Install the printer driver while the printer is activated. Check the printer status by the indicator on the front of the printer. For the indication by the indicator of the printer, see the detailed manual of the printer.**
- 17) **You can set the number of printouts from 1 to 999 in the Paper dialog, however, the maximum number of printouts per one paper roll varies depending on the paper size.**
- 18) **When you uninstall the printer, confirm that the printer is not set as default printer and then uninstall the printer driver.**
- 19) **When you reinstall the printer driver, remove the cable after uninstallation, then reinstall the printer driver.**
- 20) **When you install the printer driver, restart the computer after the installation is completed both in**

the first installation and in the reinstallation after uninstallation.

- 21) When you uninstall the printer driver, connect the printer to the same USB port as that used for installation.

## 6.2 Operating directions for customer's purpose

### 6.2.1 When you want to adjust the color of the print image

(Note that the effects are invalid on the display even if you make following setting.)

- 1) When you want the density of entire print picture to be thick (dark), decrease the value of "Brightness" of the color adjustment dialog.
- 2) When the print picture is out of focus (the contrast is weak), increase the value of "Contrast" of the color adjustment dialog.  
The contrast becomes stronger.
- 3) When you want to change the color of printout.  
Change the value of "Brightness" of the color adjustment dialog.  
Increase Red : Increase the "R" value of the color adjustment dialog.  
Increase Green : Increase the "G" value of the color adjustment dialog.  
Increase Blue : Increase the "B" value of the color adjustment dialog.
- 4) When you want to adjust Gamma of the printout.  
By moving the graph of the Gamma adjustment dialog with a mouse, the density of the entire image can be adjusted to the arbitrary Gamma curve.  
The density becomes high (dark) when you decrease the output value compared with the input value.  
The density becomes low (bright) when you increase the output value compared with the input value.

6.2.2 To adjust the gray balance in the low gray levels, use “Color correction” on the option tab

To weaken the Yellow tone : Increase the “B” value.  
To weaken the Magenta tone : Increase the “G” value.  
To weaken the Cyan tone : Increase the “R” value.  
To weaken the Red tone : Decrease the “R” value.  
To weaken the Green tone : Decrease the “G” value.  
To weaken the Blue tone : Decrease the “B” value.

### 6.3 Prohibition matter

We prohibit Reverse Engineering, decompiling or reverse assembling of this driver software.

### 6.4 Exemption from responsibility

Occasionally, this software does not operate normally depending on operating environment. FUJIFILM Corporation will not assume any responsibility for damage (including, but not limited to, lost profit or damage caused from special circumstances etc.) occurring during the use of this driver.



**FUJIFILM**

**FUJIFILM Corporation**

7-3, Akasaka 9-chome, Minato-ku, Tokyo 107-0052, Japan

---