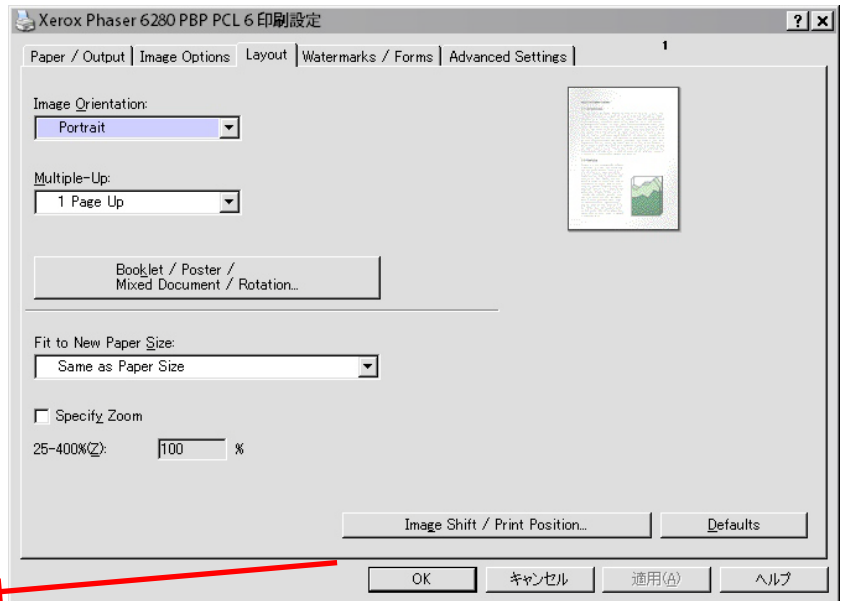
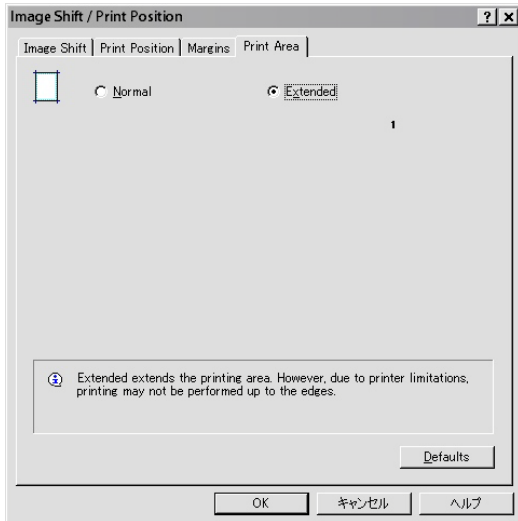


# How to make Borderless print

## <Set borderless mode>

1. On the layout tab in the printer setup window, Click "Image Shift / Print Position..."
2. In the "Image Shift / Print Position..." click "Print Area" tab.
3. Check Extended and press [OK]

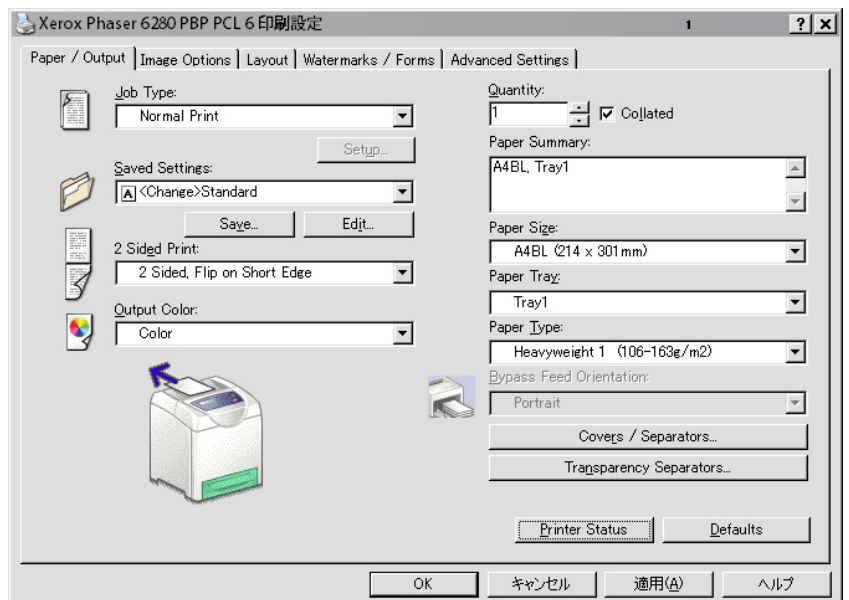


## <Set borderless mode>

1. On the main "Print" menu of Windows, click property



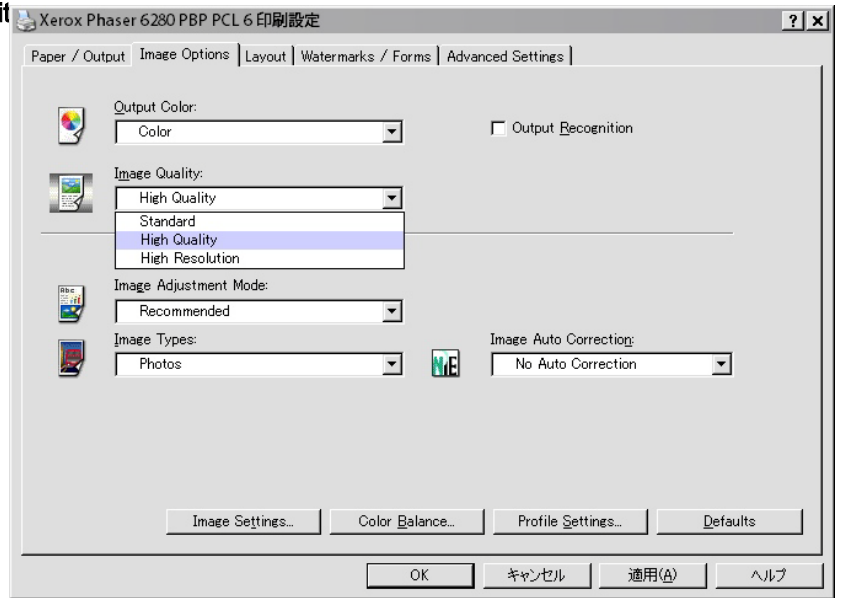
2. Set print size of borderless .



\* Following steps are common for higher image quality

A- Set Image Quality to High Quality

B- Set Image Types to Photos



C- Set "High Speed Image Processing" to Off.

